

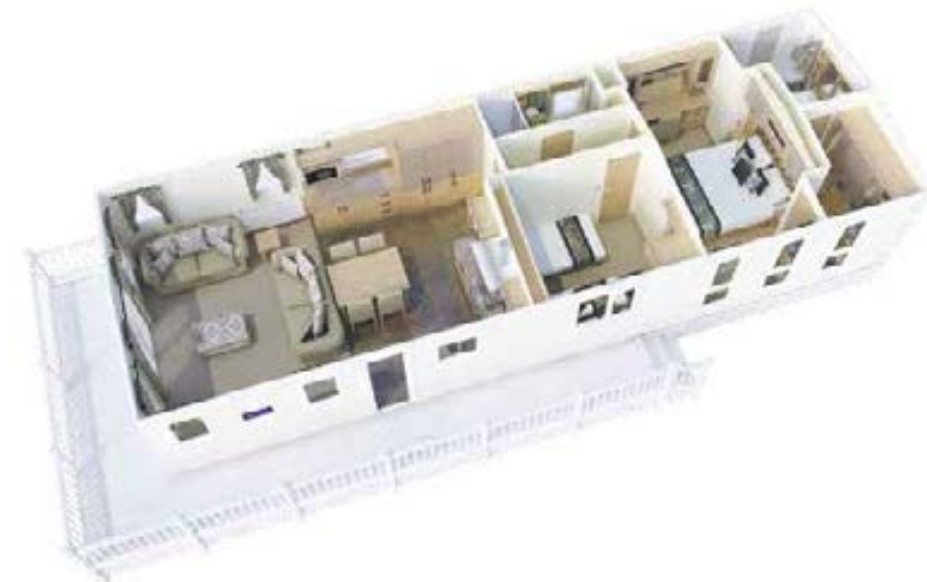
# THE BEAUMONT



**For the adventurer who loves their creature comforts.**

Get back to nature without missing out on any of life's luxuries. Packed with the finest quality finishes and no end of mod cons, this carefully crafted holiday home comes close to rivalling the beauty of the great outdoors on its doorstep.





## Highlights

- Updated colour scheme for 2019
- Luxurious furnishings and fittings throughout
- 14ft wide as standard with king size master bed and 3ft twin beds in one twin
- Walk through dressing area and en suite bath or shower (2 bedroom model only)
- Optional larder unit



To take an interactive virtual tour  
visit [www.abiuk.co.uk](http://www.abiuk.co.uk)



Shows 3 bedroom master bedroom











# The Beaumont

At 14ft wide and now available in 2 models, The Beaumont is filled with the little luxuries and fittings that really elevate it to the next level.

For external CanExel™ Cladding option please visit [www.abiuk.co.uk](http://www.abiuk.co.uk)



FACTORY Approved



For further information and to take an interactive virtual tour of The Beaumont visit [www.abiuk.co.uk](http://www.abiuk.co.uk)

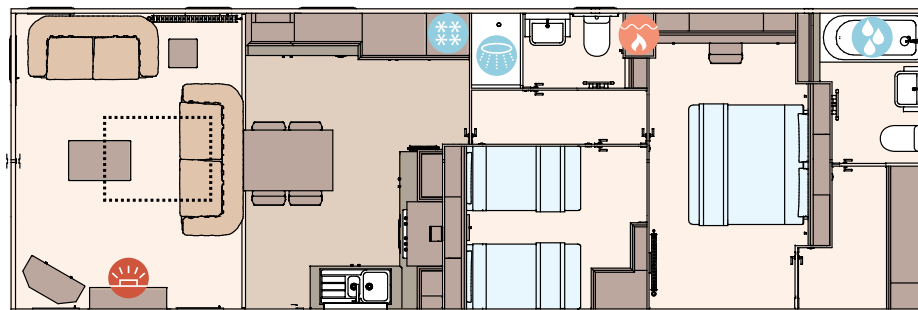
## All this included

- ✓ Fully galvanised heavy duty 'I' beam chassis
- ✓ Claystone hard PVCu cladding
- ✓ Front patio doors
- ✓ White 'Low E' PVCu Thermaglass double glazing
- ✓ Carpet underlay throughout
- ✓ Full condensing boiler gas central heating
- ✓ Voiles throughout
- ✓ Chesterfield style sofas
- ✓ Upholstered footstool
- ✓ Free-standing dining table and chairs
- ✓ Scatter cushions in lounge
- ✓ USB socket in lounge
- ✓ Satellite co-ax
- ✓ Additional sockets next to TV point in lounge
- ✓ 5 burner gas hob including wok burner
- ✓ 40mm worktops
- ✓ Composite kitchen sink
- ✓ Integrated fridge freezer
- ✓ Integrated dishwasher
- ✓ Integrated microwave
- ✓ Externally vented powered cooker hood
- ✓ Soft close hinges on doors and drawers throughout
- ✓ Lift-up bed in main bedroom
- ✓ King size bed in master bedroom

- ✓ Walk through dressing area in master bedroom (2 bedroom model only)
- ✓ Plain duvet covers and pillowcases
- ✓ Bed runners and scatter cushions on all beds
- ✓ USB sockets in all bedrooms
- ✓ TV point in all bedrooms
- ✓ En suite with domestic style bath (2 bedroom model only)
- ✓ Separate en suite shower and toilet (3 bedroom model only)
- ✓ Bathroom extractor fans
- ✓ Shaver socket
- ✓ Coat hooks in all bathrooms

## Add any of these

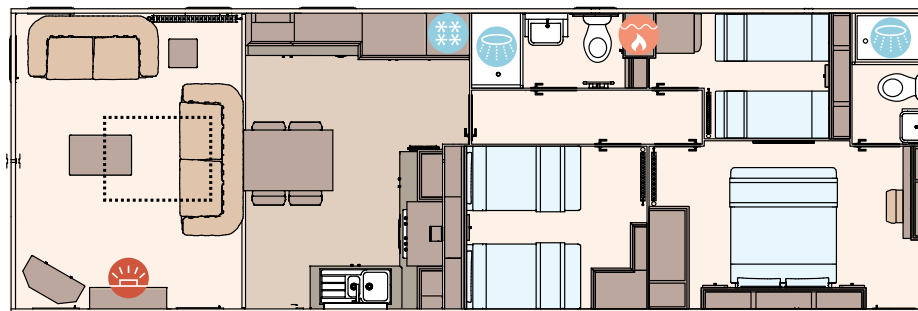
- Deluxe Bluetooth sound system
- 'Exclusive' pocket sprung mattresses
- Space saver bed for twin room
- Larder unit
- Integrated washing machine
- CanExel™ exterior cladding
- Residential specification BS3632
- 2nd room as double instead of twin, bed includes lift-up storage
- Replace en suite bath with shower cubicle (2 bedroom model only)



The Beaumont 42ft x 14ft x 2 bedroom

KEY:

- Fire
- Water Heater
- Shower
- Bath
- Fridge/Freezer
- Front pull out bed



The Beaumont 42ft x 14ft x 3 bedroom

OPTIONAL  
Residential  
specification  
BS3632  
See Page 83